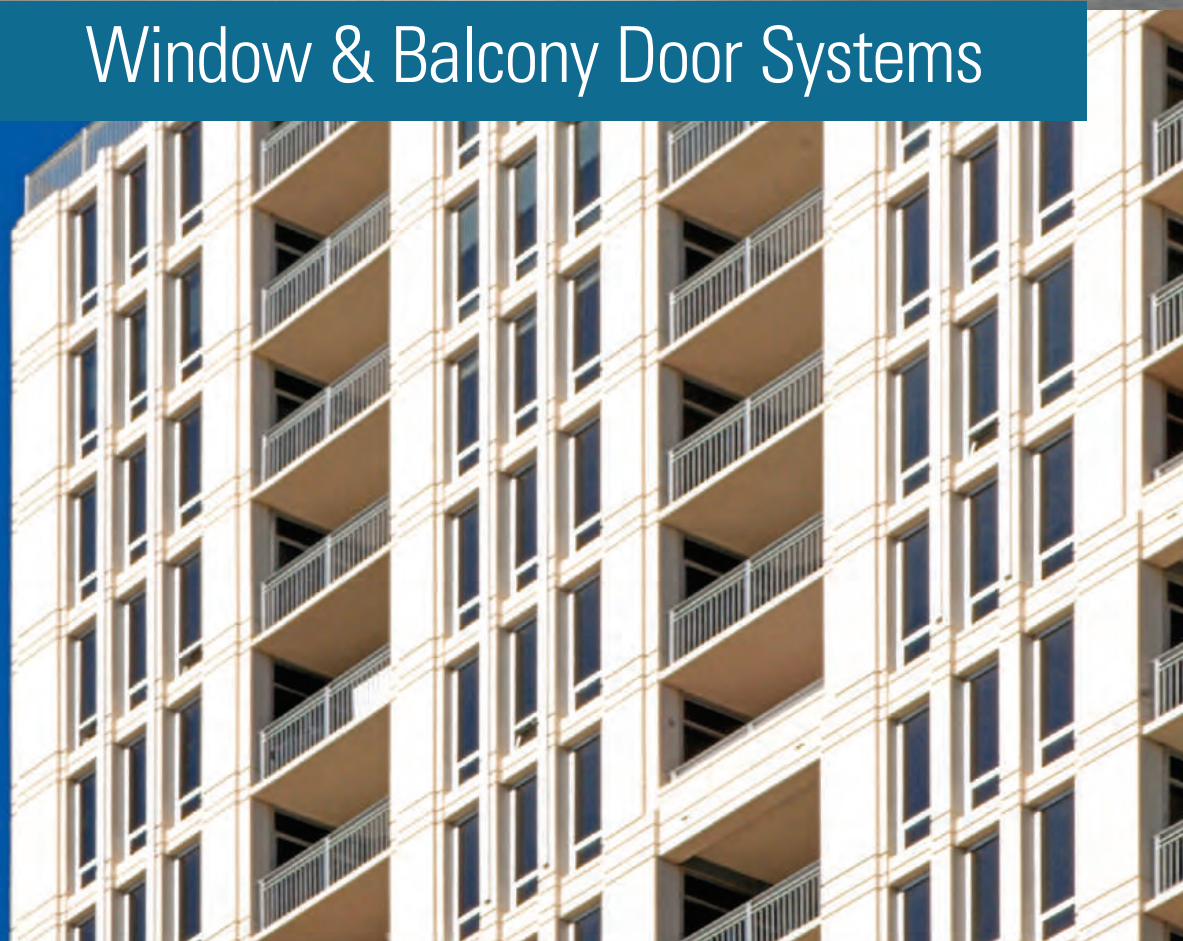




1250 Michigan Avenue, Chicago, IL

> Specify  
Quality

Window & Balcony Door Systems



Entrances | Storefronts | Curtain Wall | Windows | Sun Controls | Balcony Doors

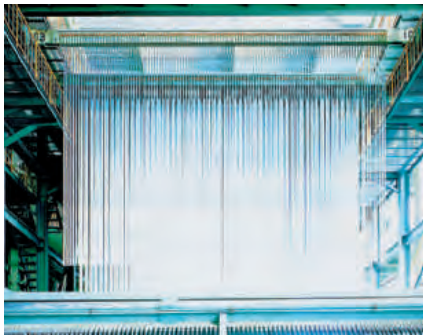


Quality  
inspires™

# YKK AP America — The Company



*YKK AP maintains a state-of-the-art ISO 14001 certified manufacturing facility in Dublin, Georgia.*



The Architectural Products division of YKK is today a world leader in the manufacture of aluminum building products. YKK AP is committed to producing architectural products of the highest quality and at the lowest possible cost. To this end, YKK AP

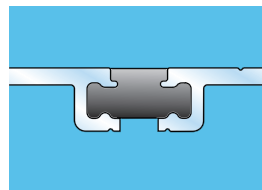
has built one of the newest and most technologically advanced manufacturing facilities in the United States in Dublin, Georgia. There, all manufacturing is vertically integrated to ensure control of quality, delivery and cost.

YKK AP America's slogan "Quality inspires™", expresses our belief that quality goes far beyond the products we ship from the plant. Quality is the driver behind every YKK AP product — including every action, every process and every service for every YKK AP customer.

To provide years of dependable use, a new building must have excellence built-in from the beginning. That is why architects, developers and construction engineers are specifying architectural aluminum entrance, storefront, curtain wall, window and balcony door systems from YKK AP.

YKK AP has a long track record of enhancing the exterior envelope of all types of buildings, including office buildings, stadiums, malls, schools, hospitals, hotels, condominiums, and more. Our products ensure users a safe, sustainable and comfortable environment. For example, YKK AP pioneered the introduction of **YKK AP ProTek™** — a unique family of systems that mitigate risks associated with natural and man-made disasters.

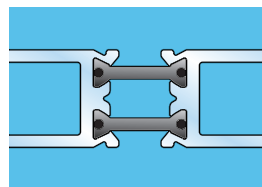
As Architects and builders employ "green" design, they are turning to YKK AP for custom-crafted, sustainable building products.



## **ThermaBond Plus®**

(poured and debrided thermal break)

Combining science and technology, YKK AP employs a patented process, ThermaBond Plus, to greatly improve the adhesion of the polyurethane to the aluminum extrusion.



## **MegaTherm®**

YKK AP also offers an integral thermal barrier system that employs the use of 6/6 nylon polyamide glass fiber reinforced pressure extruded bars. This has several advantages over the more commonly used poured and debrided

polyurethane barriers. It will not shrink or degrade over time. It will not crack if penetrated by screws or if weep holes are cut into it. Its lineal expansion is very close to that of aluminum, virtually eliminating creeping, thermal expansion and internal stresses. It also offers greater design versatility by allowing the use of different finish options from interior to exterior surfaces.

## **Anodized Plus®**

YKK AP has the only finish that meets all of the requirements of AAMA 612, the newest standard for anodized finishes. It combines the beauty of anodizing with performance characteristics that resist damage from mortar, alkali and other chemicals. Your building is protected from harsh construction conditions as well as other environmental elements for the lifetime of the building. Anodized Plus is available in clear, dark bronze, medium bronze, black, champagne and white finishes.

In addition, YKK AP offers a variety of painted finishes that are applied at our environmentally friendly Dublin facility which meet or exceed the requirements of AAMA 2603, 2604 and 2605.

For additional information about the full line of quality products and services offered by YKK AP, call 1-800-955-9551 or visit our web site at [www.ykkap.com](http://www.ykkap.com).

# YKK AP America



*Patterson Pump, Toccoa, Georgia  
Architect: Design South  
Glazing Contractor: Jemmings Paint & Glass, Inc.  
Systems Used: YCW 750 OG & YCW 750 CV*

## YCW 750 Concealed Vent

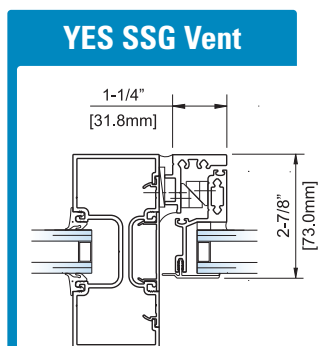
**Maintains standard curtain wall sightline, visible only when in open position.**

- Available configuration: Project Out
- AAMA/WDMA HC-60 rated
- Accepts 1" insulating glass
- YKK AP MegaTherm® thermal break
- Separate interior/exterior finish options
- Standard heavy-duty hardware

## YES SSG Vent

**Minimal sightline vent for use with storefront framing systems.**

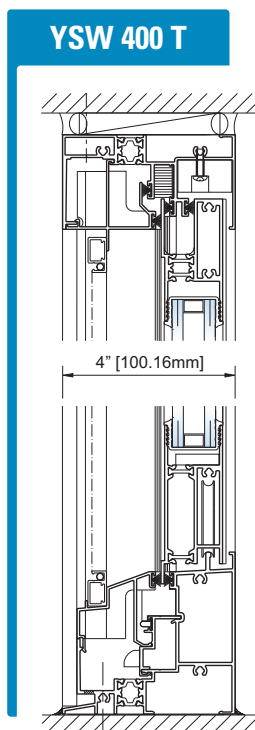
- Available configurations; Casement Outswing or Project Out
- AAMA/WDMA HC-60 rated
- Accepts 1" insulating glass
- Standard heavy-duty hardware
- Screens available



## YSW 400 T

**Architectural grade horizontal sliding window that offers ease of operation and is thermally broken.**

- Available configurations: OX, XO, OXO, & XOX
- AAMA/WDMA AW-40 rated
- Accepts 1" insulating glass
- YKK AP MegaTherm® thermal break
- Standard heavy-duty hardware
- Factory glazing
- YVS 410 TU fixed lites available above, below, or next to sliding window
- Head/jamb receptors, & stacking mullions



*New Palz Central High School, New Palz, New York  
Architect: Collins & Scoville Architects, P.C.  
Glazing Contractor: Forno Enterprises, Inc.  
Systems Used: YES 45 FI, YES 45 TU, YSW 400 T & YVS 400 TU*

## YOW 350 T

### Thermally broken heavy duty operable window.

- Available configurations: Casement Outswing, Project Out, & Fixed
- AAMA/WDMA/CSA 101 I.S. 2/A 440-05  
– AW-80 Operable, AW-100 Fixed
- MegaTherm® thermal break
- 3-1/2" frame depth
- Accepts 1" insulating glass
- Factory glazing & screens
- Head/jamb receptors & stacking mullions
- Standard heavy-duty hardware

## YOW 225

### High performance operable windows.

- Available configurations: Casement Outswing/Inswing, Project Out/In, & Fixed
- AAMA/WDMA: AW-60 Operable, AW-100 Fixed
- 2-1/4" frame depth
- Accepts 1/4" to 1" glazing
- Factory glazing & screens
- Head/jamb receptors & stacking mullions
- Standard heavy-duty hardware

## YOW 225 TU

### High performance thermally broken operable windows.

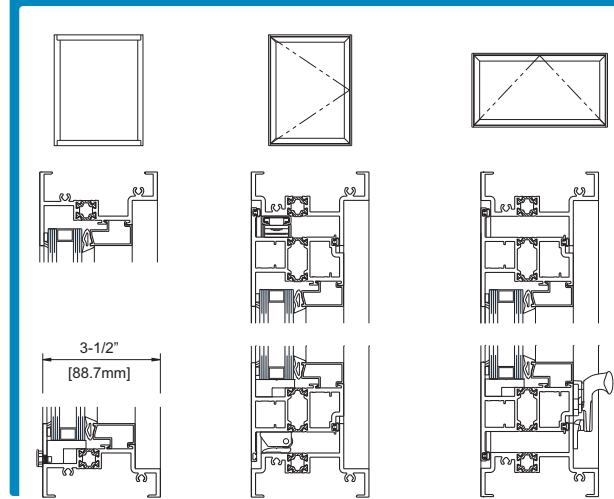
- Available configurations: Casement Outswing/Inswing, Project Out/In, & Fixed
- AAMA/WDMA: AW-65 Operable, AW-100 Fixed
- 2-1/4" frame depth
- ThermaBond Plus® thermal break
- Accepts 1/4" to 1" glazing
- Factory glazing & screens
- Head/jamb receptors & stacking mullions
- Standard heavy-duty hardware

## YVS 400 TU Tilt-in YVS 410 TU Side Load

### High performance, thermally broken single and double hung windows.

- AAMA/WDMA: YVS 400 TU – AW-50 Hung  
YVS 410 TU – AW-65 Hung & AW-100 Fixed
- 4" frame depth
- ThermaBond Plus® thermal break
- Accepts 1/4" to 1" glazing
- Factory glazing & screens
- Full selection of block & tackle, spiral, and Class 5 Ultra-Lift balances
- SecurSweep sweep locks and SafSupport tilt support arms
- Full assortment of receptors, sill flashing, stacking mullions, panning, trim, & muntins

## YOW 350 T



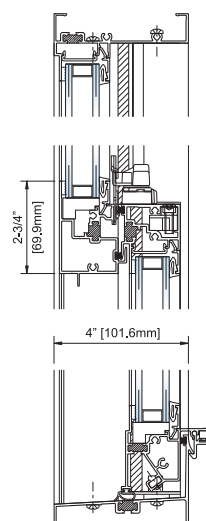
905 Juniper, Atlanta, Georgia

Architect: Cooper Carry

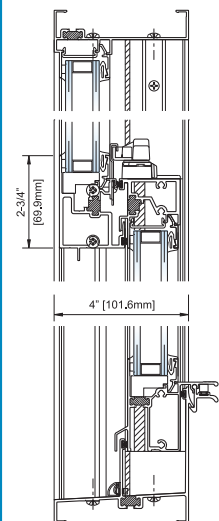
Glazing Contractor: Tuxedo Glass & Mirror, Inc.,

Systems Used: YCW 750 OG, YWW 50 T w/slab edge cover, YCW 750CV, YOW 225 TU, YSD 400 T, & Model 35D

## YVS 400 TU



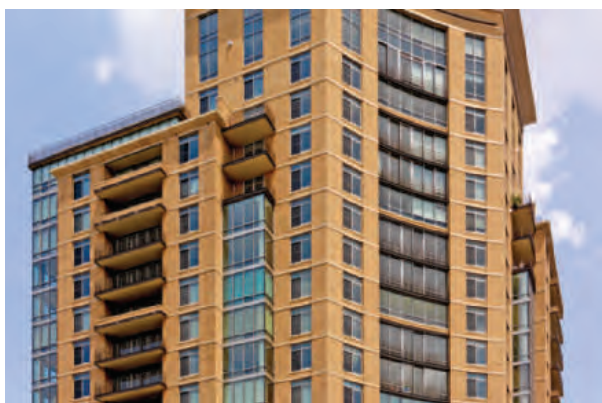
## YVS 410 TU



# YKK AP America



*Vista on The James, Richmond, Virginia*  
Architect: Rule Joy Trammell Architecture  
Glazing Contractor: American Door & Glass  
Systems Used: YCW 750 OG, YWW 50 T w/ slab edge cover, YSD 400, & Model 50D



*The Vue at Harbor East, Baltimore, Maryland*  
Architect: Beatty, Harvey & Associates  
Glazing Contractor: Emmitsburg Glass  
Systems Used: YCW 750 OG, IG, YWE 60T, YCW 750CV, YES SSG Vent, YSW 400 T, YVS 410TU, YSD 600 T, & Model 50D

## YSD 400

**Heavy commercial grade sliding door that withstands higher structural loads without sacrificing aesthetics.**

- Available configurations: OX, XO, XX, OXO, & OXXO
- AAMA/WDMA HC-60 Rated
- 4-1/16" frame depth
- Accepts 1" insulating glass
- Factory glazing & screens
- High sills & head/jamb receptors
- Standard heavy-duty hardware, including stainless steel tandem rollers & track cover for years of worry-free operation

## YSD 600 T

**Thermally broken architectural grade sliding door.**

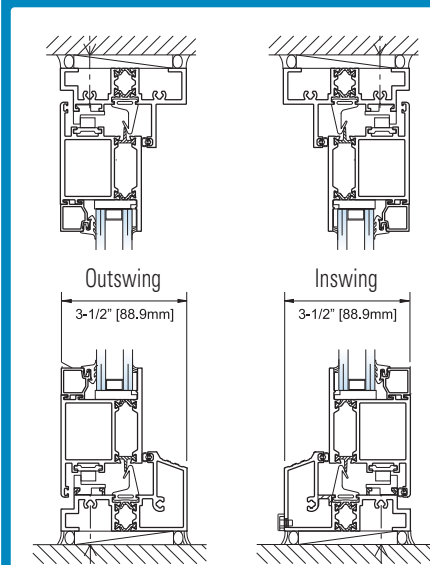
- Available configurations: OX, XO, OXO, & OXXO
- AAMA/WDMA AW-75
- 6" frame depth
- Accepts 1" or 1-3/16" insulating glass
- Factory glazing & screens
- Standard heavy-duty hardware, including stainless steel tandem rollers & track cover for years of worry-free operation

## YSD 700

**Heavy commercial sliding door.**

- Available configurations: OX, XO, OXO, & OXXO
- AAMA/WDMA HC-120
- 7" frame depth
- Accepts monolithic or insulating glass
- Factory glazing (active panels) & screens
- Standard heavy-duty hardware, including stainless steel tandem rollers & track cover for years of worry-free operation

## YTD 350 T



## YTD 350 T

**High performance, thermally broken architectural terrace swing door.**

- 3-1/2" or 4-1/2" frame depth
- Available configurations: Outswing and Inswing
- YKK AP MegaTherm® thermal break
- AAMA/WDMA/CSA/101/I.S.2/A440-05
  - Outswing: ATD AW-80 single door, ATD AW-65 pair doors
  - Inswing: ATD AW-40 single and pair doors
- Doors shipped completely fabricated and mounted in frame to expedite installation
  - Single Doors: Up to 4'-0" x 8'-0" Frame Height
  - Pair Doors: Up to 8'-0" x 8'-0" Frame Height
- Factory glazing
- Fully adjustable hinges standard for proper alignment and weathertight seal
- Multi-point locking system for engages top and bottom rails in addition to the locking stile for added security

# YKK AP ProTek™ Impact Resistant & Blast Mitigation Systems

## IMPACT RESISTANT SYSTEMS

All YKK AP ProTek™ systems are engineered to create a protective envelope around your building – protecting it from fierce cyclical pressures and projectiles associated with hurricane force winds.

Contact YKK AP for glazing requirements.

SYSTEMS	IMPACT TESTED	
	Sm. Missile	Lg. Missile
<b>WINDOWS</b>		
YOW 225 H	YES	YES
YOW 225 TUH	YES	YES
YVS 410 TUH	YES	YES
<b>SLIDING DOORS</b>		
YSD 600 TH	YES	YES
YSD 700 H	YES	YES



All YKK AP ProTek™ window & sliding door systems are fully tested for Large & Small Missile Impacts compliant with South Florida Building Code Test Protocols TAS 201, TAS 203, and ASTM E 1886 & 1996.

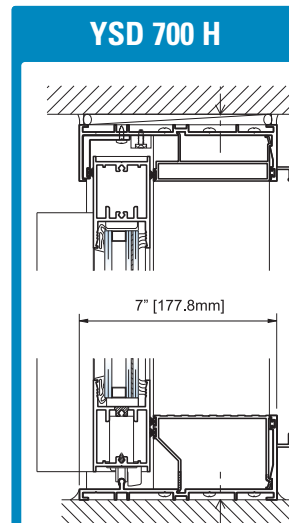
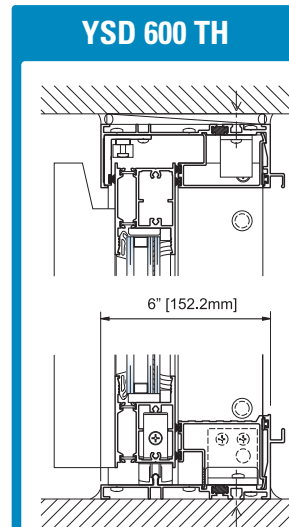
## YSD 600 TH

**Thermally broken sliding door for high performance and hurricane impact applications.**

- Available configurations: OX, XO, OXO, & OXXO
- AAMA/WDMA ±75 PSF
- Miami Dade NOA and Florida state-wide approval +100/-120 PSF
- 6" frame depth
- Accepts 1" or 1-3/16" insulating glass
- Factory glazing & screens
- Standard heavy-duty hardware, including stainless steel tandem rollers & track cover for years of worry-free operation



*Southwind on the Ocean, Myrtle Beach, South Carolina*  
Architect: Pegram Associates  
Glazing Contractor: Coastal Glass  
Systems Used: YSD 600 TH



## YSD 700 H

**Heavy commercial sliding door for hurricane impact applications.**

- Available configurations: OX, XO, OXO, & OXXO
- AAMA/WDMA HC-120
- Miami Dade NOA and Florida state-wide approval +100/-120 PSF
- 7" frame depth
- Accepts 9/16" monolithic, 1" or 1-3/16" insulating glass
- Factory glazing (active panels) & screens
- Standard heavy-duty hardware, including stainless steel tandem rollers & track cover for years of worry-free operation

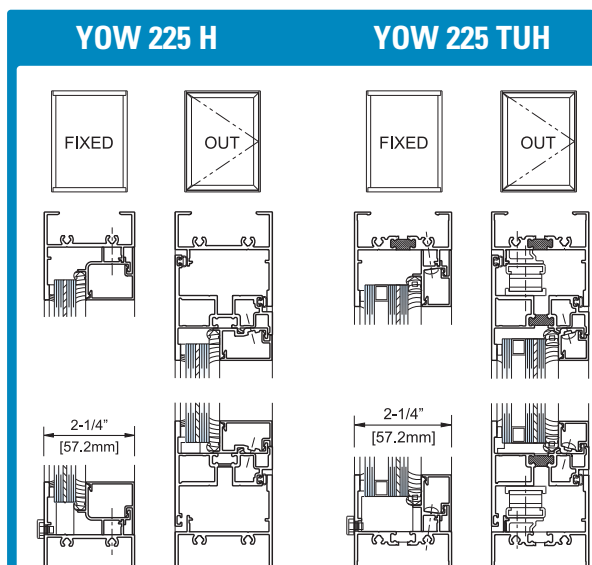


Windows shown on this page were tested at 6psi/41psi-ms, resulting in the following performance ratings:

SYSTEMS <sup>(1)</sup>	Protection Levels		Comments
	ASTM F 1642 <sup>(2)</sup>	GSA-TS01	
<b>YOW 225 TUH</b>			
Casement Out	Minimal Hazard	3b	6psi/41 psi-ms
Fixed/Project Out	Minimal Hazard	3b	6psi/41 psi-ms
<b>YVS 410 TUH</b>			
Single Hung	Minimal Hazard	3b	6psi/41 psi-ms

<sup>(1)</sup>-Contact YKK AP for glazing requirements

<sup>(2)</sup>-Tested in accordance with ASTM F 1642 for compliance with UFC 4-010-01



## BLAST MITIGATION SYSTEMS

YKK AP has applied all the knowledge and experience that we gained in leading the development of hurricane impact resistant systems to providing protection for building occupants from man-made disasters. The majority of YKK AP ProTek™ systems meet the requirements of the Unified Facilities Criteria (UFC) and the requirements of the GSA. Several Systems have been fully tested in accordance with ASTM F-1642 to provide proven performance at higher loads without reinforcements

Contact YKK AP for glazing requirements.

### YVS 410 TUH Side-load

| Thermally broken impact resistant single hung window.

- Available configurations: Single Hung, & Fixed
- AAMA/WDMA AW-65 (Hung) & AW-100 (Fixed) rated
- Miami Dade NOA and Florida state-wide approval +80/-120 PSF
- 4" frame depth
- ThermaBond Plus® thermal break
- Accepts 1" Large & Small Missile glazing
- Factory glazing and screens
- Block & Tackle, Spiral, and Class 5 Ultra-Lift® balances
- Blast Mitigation Testing

### YOW 225 H

| Impact resistant operable window.

- Available configurations: Casement Outswing, Project Out, & Fixed
- AAMA/WDMA AW-65 Operable, AW-100 Fixed
- Miami Dade NOA and Florida state-wide approval +65/-65 PSF operable, +100/-100 PSF fixed
- 2-1/4" frame depth
- Accepts 9/16" glazing
- Factory glazing and screens
- Stacking mullions
- Standard heavy-duty hardware
- Blast Mitigation Testing

### YOW 225 TUH

| Thermally broken impact resistant operable window.

- Available configurations: Casement Outswing, Project Out, & Fixed
- AAMA/WDMA AW-65 Operable, AW-100 Fixed
- Miami Dade NOA and Florida state-wide approval +65/-65 PSF operable, +100/-100 PSF fixed
- 2-1/4" frame depth
- ThermaBond Plus® thermal break
- Accepts 1-1/16" glazing
- Factory glazing and screens
- Stacking mullions
- Standard heavy-duty hardware
- Blast Mitigation Testing

# Additional Information

## Service Centers

### Atlanta

5610 Gwaltney Drive  
Atlanta, GA 30336  
Tel: 404-629-3870  
Fax: 404-629-3899

### Boston

Eight Connector Road  
Andover, MA 01810  
Tel: 978-749-9554  
Fax: 978-749-2915

### Baltimore

8680 Greenwood Place  
Savage, MD 20763  
Tel: 301-498-3650  
Fax: 301-498-3755

### Chicago

1000 Stevenson Court  
Suite 100  
Roselle, IL 60172-4314  
Tel: 630-582-9602  
Fax: 866-955-2441

### Cincinnati

5406 Spellmire Drive  
Cincinnati, OH 45246  
Tel: 513-942-7200  
Fax: 513-682-2123

### Dallas

2025 W. Belt Line Road  
Suite 130  
Carrollton, TX 75006  
Tel: 972-245-9551  
Fax: 972-245-9522

### Greensboro

4524 Green Point Drive  
Suite 106  
Greensboro, NC 27410  
Tel: 336-665-1963  
Fax: 336-665-1965

### Houston

3550 Brittmoore Road  
Suite 200  
Houston, TX. 77043  
Tel: 713 329-9551  
Fax: 713 939-0811

### Orlando

7608 Currency Drive  
Orlando, FL 32809  
Tel: 407-856-0660  
Fax: 407-856-0090

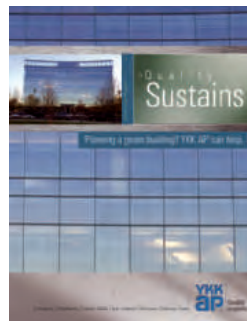
### Headquarters

7680 The Bluffs  
Suite 100  
Austell, GA 30168  
Tel: 678-838-6000  
Fax: 678-838-6001

Download these brochures and more at [www.ykkap.com](http://www.ykkap.com)



Hurricane Impact Resistant



Environmental (LEED)



Blast Mitigation

For architectural specifications, details and warranty information, call 1-800-955-9551 or visit our website at [www.ykkap.com](http://www.ykkap.com).

The contents of this catalog are intended for product information only. All information and details within this catalog are subject to change without notice.

see us at  
**Sweets**.com

©2008 YKK Corporation of America  
16-1006-00

YKK AP America Inc.  
7680 The Bluffs, Suite 100  
Austell, GA 30168  
1-800-955-9551  
[www.ykkap.com](http://www.ykkap.com)

**YKK**  
**ap** Quality  
inspires™