

Sliding Glass Doors

EFCO sliding glass doors are engineered for performance, appearance and security. Designed for high-rise hotel, condominium and residential buildings, the doors offer multiple glazing and frame-depth options, ensuring that they fit most applications.

EFCO sliding glass doors are available in Heavy Commercial and Architectural Grade ratings. They have continuous, interlocking meeting rails and raised sill tracks—ensuring air, water and structural performance.

In some doors, EFCO E-Strut™ technology enhances the energy savings, especially in climates with extreme conditions and temperature variance.

5XPT

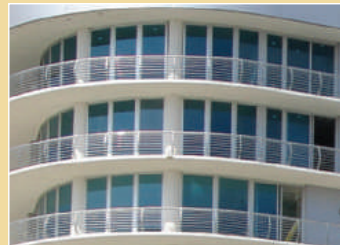
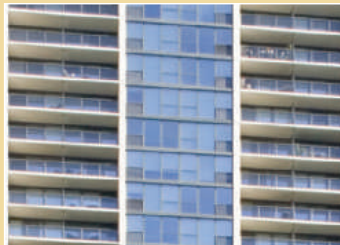
The 5XPT Thermal High-Performance Sliding Glass Door is EFCO's newest product—and the latest to enhance energy savings and condensation resistance with the E-Strut thermal barrier. The 5XPT is also designed to use impact-rated glass products, while multiple glazing options add design flexibility. The system accommodates glazing up to 1-5/16". Meanwhile, the low sill profile helps provide a modern, streamlined look.



Sliding glass doors

Products	Frame Depth	Sightline	Glazing	Thermal	AAMA Rating
3000	3-1/4"	3-11/16"	Up to 1"	Y	SGD-HC40
3050	3-1/4"	3-11/16"	Up to 1"	N	SGD-HC40
3900 Fixed	3-1/4"	3-11/16"	Up to 1"	Y	F-AW75
3001	3-1/4"	3-11/16"	Up to 1"	Y	SGD-HC60
3010	4-1/4"	3-5/16"	Up to 1"	Y	HC55
3005	4-1/2"	3-7/16"	Up to 1"	N	HC150
3006 Fixed	4-1/2"	2"	Up to 1"	E-Strut™	
3007 Fixed	4-1/2"	2"	Up to 1"	N	
3014	4-1/2"	2-7/16"	Up to 1"	N	SGD-HC55
3015	4-1/2"	2-7/16"	Up to 1"	E-Strut™	SGD-HC90
3016 Fixed	4-1/2"	2-7/16"	Up to 1"	N	
3017 Fixed	4-1/2"	2-7/16"	Up to 1"	E-Strut™	
● 5XP	5"	1-1/2"	Up to 1-5/16"	N	SGD-AW180
● 5XPT	5"	1-1/2"	Up to 1-5/16"	Y	SGD-AW155
● 5FX Fixed	5"	1-1/2"	Up to 1-5/16"	N	
● 5FXT Fixed	5"	1-1/2"	Up to 1-5/16"	Y	

● Impact Grade



For a complete listing of EFCO products, please visit us online at efcocorp.com or call us at 800.221.4169

WHERE WINDOWS ARE JUST THE BEGINNING

